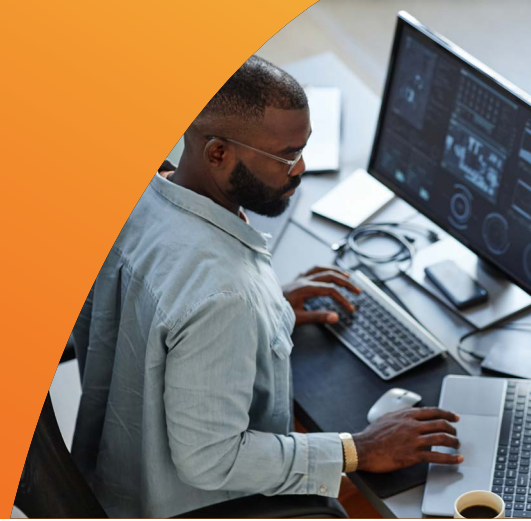




MuleSoft Agent Fabric Accelerator

Connect, orchestrate, and govern AI agents across every enterprise system



As enterprises adopt AI agents across CRMs, ERPs, data platforms, support tools, and custom apps, complexity grows fast. Each system runs its own agents, but they still need to share data, coordinate actions, and execute processes across applications.

MuleSoft Agent Fabric solves this challenge by providing the connective tissue between systems and agents. It gives enterprises a unified layer to organize, govern, and orchestrate agents - ensuring you can trigger actions, communicate, and execute workflows across the entire business.

Argano's MuleSoft Agent Fabric Accelerator jumpstarts this foundation, helping you operationalize agentic automation faster with pre-built patterns, governance, and integration frameworks.

Our Approach



Assessment

Analyze current integration maturity and agent potential across key systems.



Framework Deployment

Implement Argano's MuleSoft Agent Fabric Accelerator with API, security, and governance templates.



Integration Enablement

Connect systems and expose agent-ready endpoints through MuleSoft's API-led model.



Activation

Deploy and test agentic workflows with real business scenarios.



Enterprise Roadmap

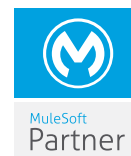
Define next steps for scaling and operationalizing enterprise AI initiatives.

Benefits

- **Orchestrated Intelligence:** Unify and coordinate agents across CRMs, ERP, data platforms, and custom systems – so they can work together, not in silos
- **Enterprise-Wide Connectivity:** Expose secure, governed endpoints and events that allow agents to act anywhere across your environment
- **Trust, Security & Compliance:** Control how agents access systems, data, APIs, and actions – with complete auditability and policy enforcement
- **Future-Proof Architecture:** Grow from a single agent to a complex agent network capable of self-orchestration and continuous learning

Capabilities

- **MuleSoft Agent Registry:** Central catalog of enterprise agents and tools – including MCP and A2A agents – enabling discovery, reuse, and composition
- **MuleSoft Agent Broker:** Coordinates and routes tasks across agents and systems, ensuring intelligent sequencing and execution across the business
- **MuleSoft Agent Governance:** Applies enterprise-grade policy, security, audit, and trust controls for every agent interaction and API call
- **MuleSoft Agent Visualizer:** Real-time visibility into agent workflows, dependencies, actions, and performance – ensuring transparency and operational safety



Learn more at argano.com

Contact us at connect@argano.com to activate intelligent connectivity with the MuleSoft Agent Fabric Accelerator.

